



Mobilizing Communities for Kindergarten Readiness and Elementary Proficiency

KENTUCKY
GOVERNOR'S
OFFICE of
EARLY CHILDHOOD





Presenters

Terry Tolan, Kentucky Governor's Office of Early Childhood

Brigitte Blom Ramsey, Kentucky Early Childhood Advisory Council

& United Way of Greater Cincinnati/Northern Kentucky

KENTUCKY
GOVERNOR'S
OFFICE of
EARLY CHILDHOOD



Early Childhood Advisory Council (ECAC) Timeline

1990

KERA

Kentucky Education Reform Act –
Created State-Funded Preschool program

2000

KIDS NOW

Kentucky Invests in Developing Success –
Created The Early Childhood Development Authority. Committed 25% of tobacco settlement to Early Childhood

2009

Governor's Task Force

Governors Task Force on Early Childhood Development & Education
A 28 member task force makes **eight** recommendations for early childhood in Kentucky

2011

ECAC

Early Childhood Advisory Council (ECAC) Governor creates the 26 member council to promote program accountability and provide guidance that affects Kentucky children and families

Our Business Model

Early Childhood Advisory Council (ECAC)

Children Enter Kindergarten Ready

High Quality Early Learning Environments

Participation in STARS

A great early childhood workforce

Scholarships & PD Plans

Supportive Families

Families understand child health and developmental needs

Families are engaged

Children have access to appropriate services

Access to Data

Common Kindergarten Entry Screener

Data is shared by early childhood programs

System Integration is a Must

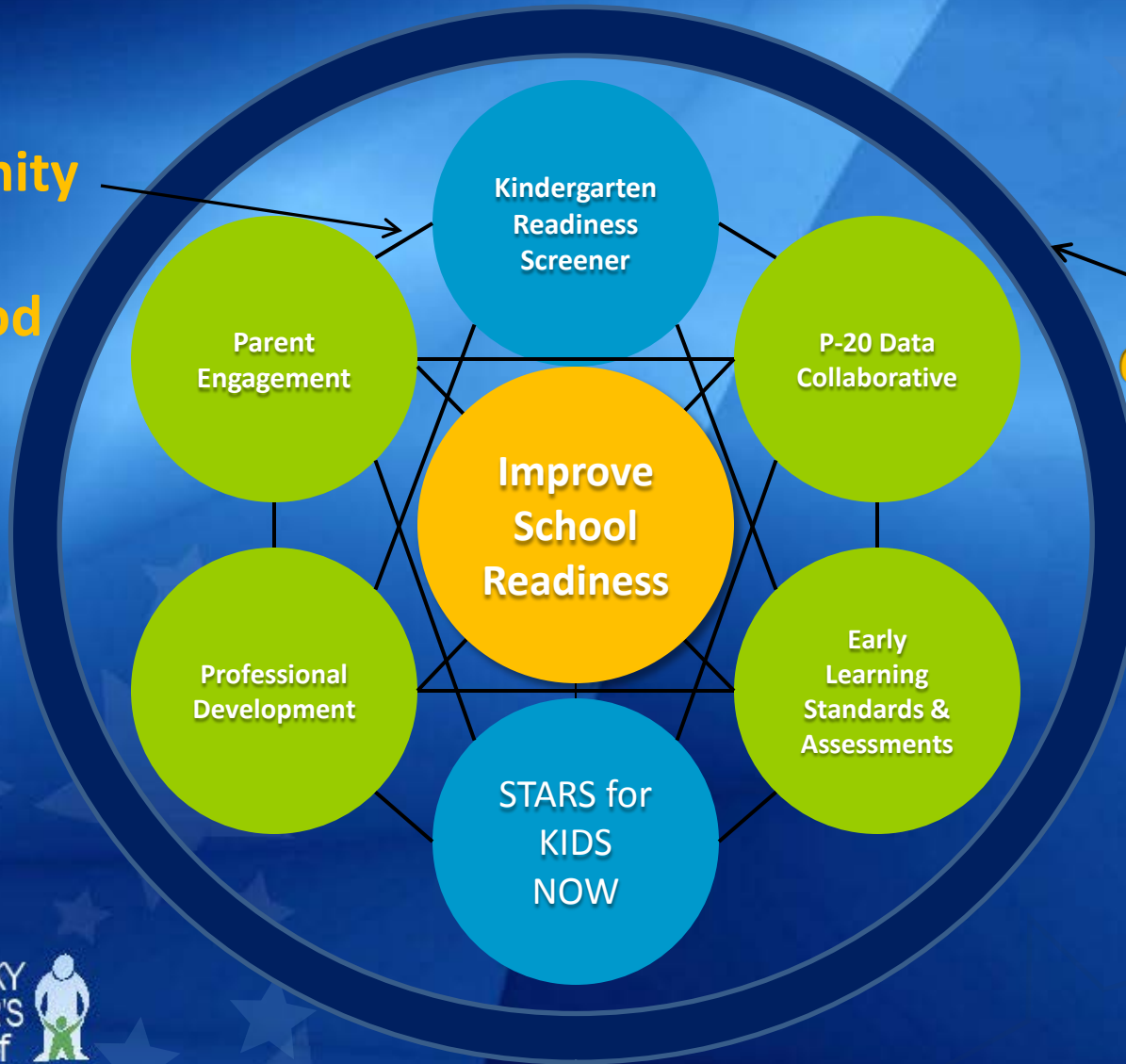
Race To The Top/Early Learning Challenge

- Integrated state systems
- Cross Sector tiered quality and improvement system including child care, head start, and public preschool
- Integrated professional development
- Meaningful family engagement
- Use of assessments to measure child progress
- Integrated longitudinal data system



Elements of the State System

Community
Early
Childhood
Councils



Schools
Communities
Child Care

School Readiness in Kentucky

School readiness means that each child enters school ready to engage in and benefit from early learning experiences that best promote the child's success and ability to be Ready to Grow, Ready to Learn & Ready to Succeed.



- Sorts and classifies objects
- Is learning to identify basic colors
- Is learning to recognize name and general shapes
- Counts up to 30
- Counts sets of objects up to 10



- Eats a balanced diet
- Gets plenty of rest
- Receives immunizations
- Receives regular medical and dental care
- Runs, jumps and does other activities



- Child is curious
- Has the ability to focus and listen
- Continues in tasks that are challenging
- Child plays in groups or pairs based on interest
- Child initiates learning experiences

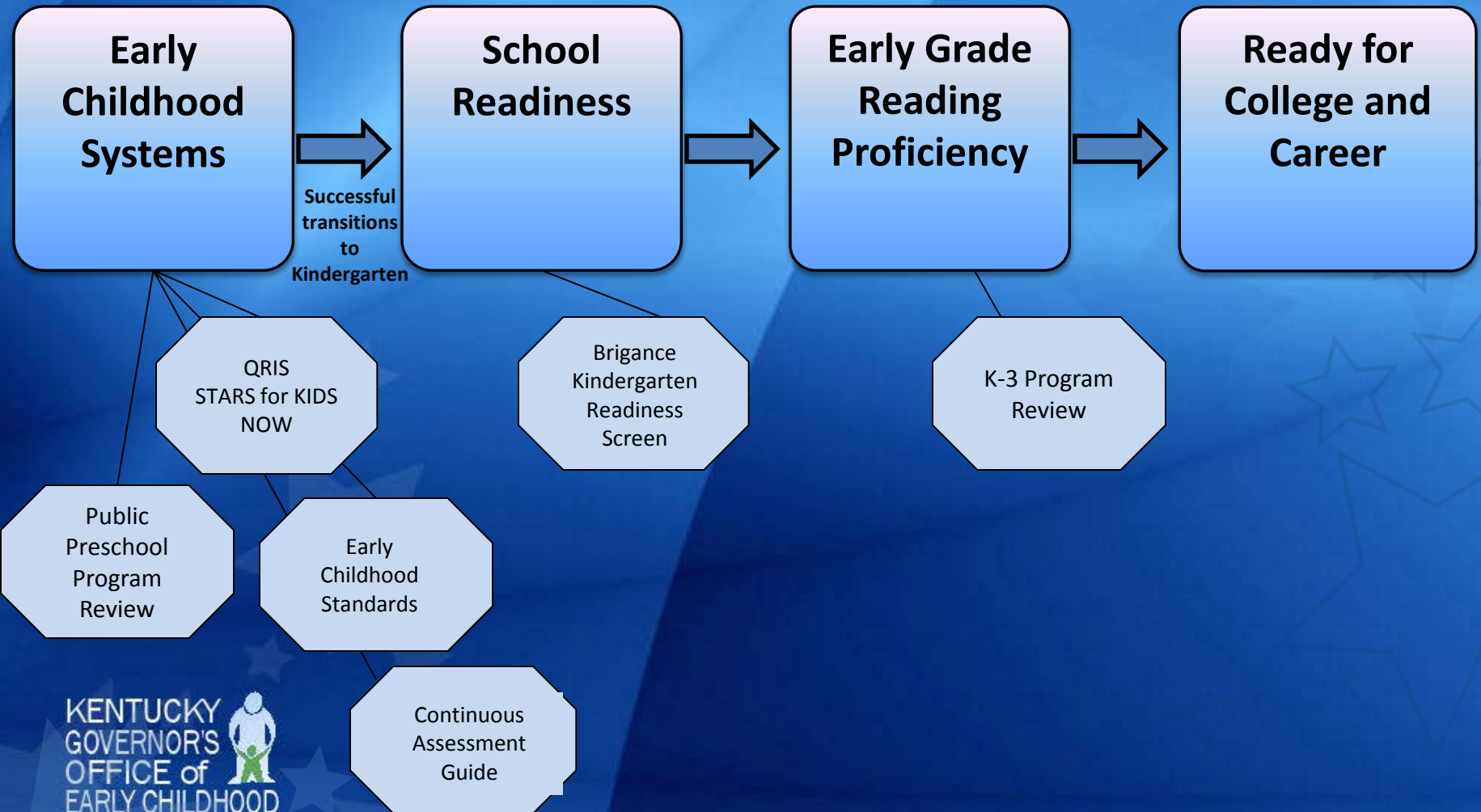


- Is learning to play and share with others
- Follows simple rules and routines
- Shows curiosity
- Is learning to explore new things
- Is learning to work alone



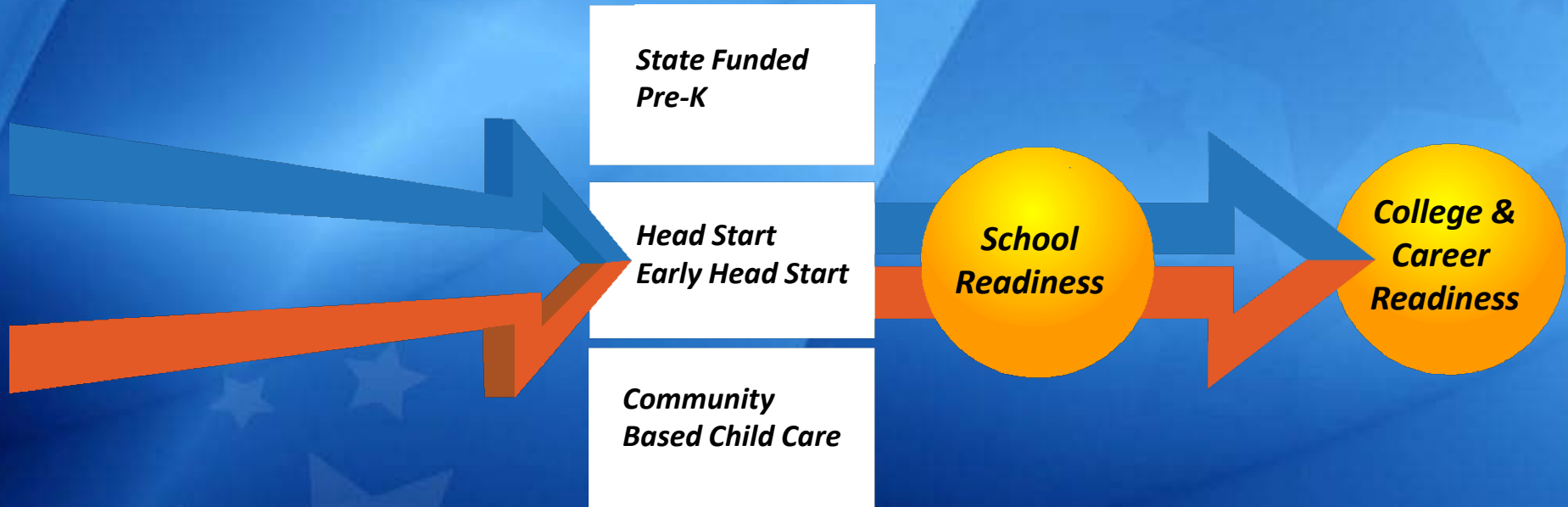
- Knows full name
- Is learning to write own name
- Uses pictures to tell stories
- Is learning home address
- Speaks in five or six word sentences

System of Measurement



State Alignment

All Sectors Moving in the Same Direction



Synergy across systems

- Kentucky Board of Education Strategic Plan: School Districts will develop and implement a School Readiness Plan
- Head Start: Required to have a School Readiness Plan
- Community Early Childhood Council: Required to develop a School Readiness Plan focused on outcomes

Why are the early years so important?

The transition from primary grades to intermediate grades

Learn to Read

Pre-K to third grade



Read to Learn

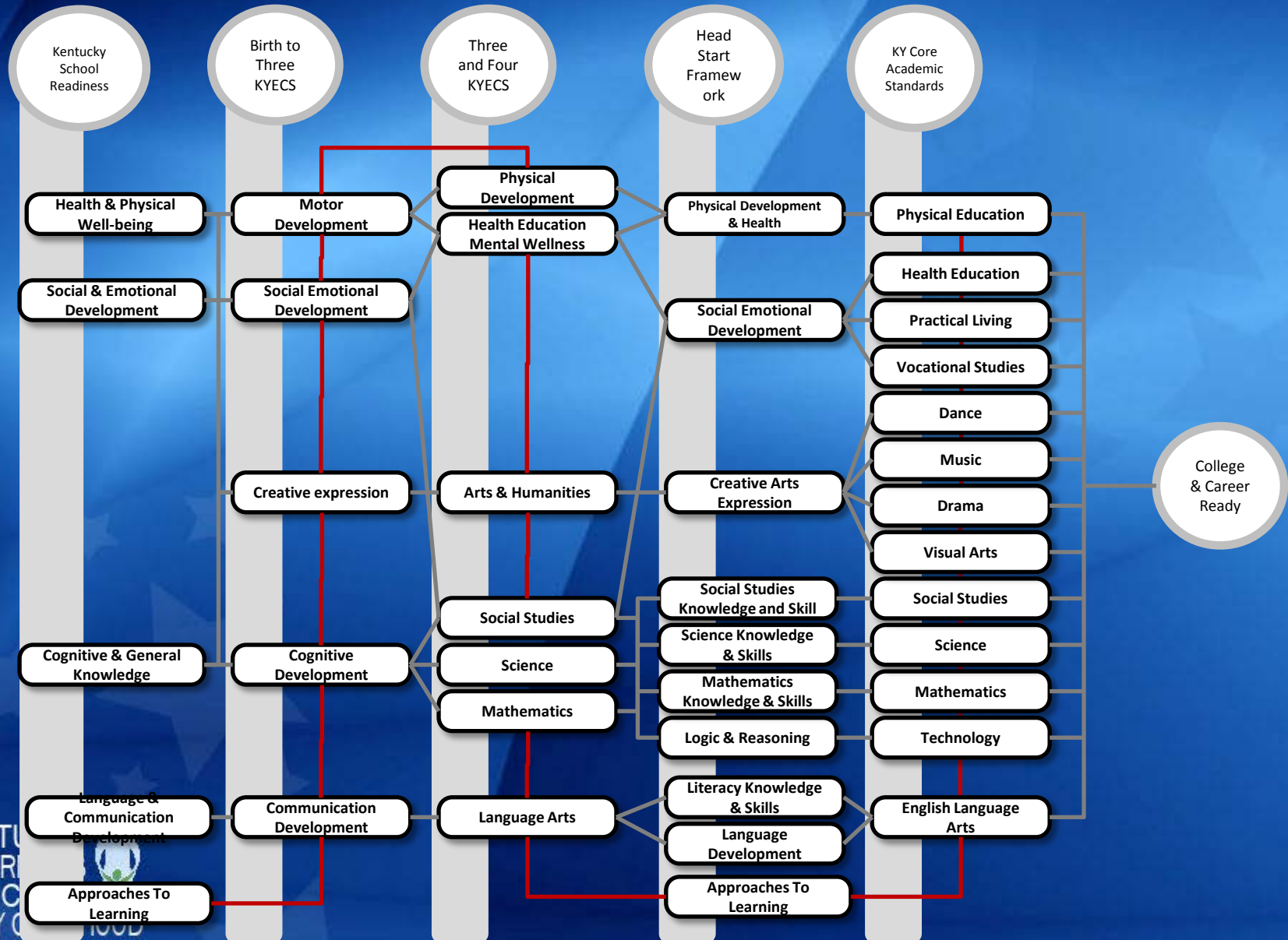
4th grade and up

“Learning to read by the end of third grade is the most important predictor of success for children. If children have not learned to read by that time, they will be *unable to read to learn* in the upper elementary and secondary grades.”

Terry Holliday, KY Education Commissioner

Kentucky Early Childhood Standards

Linkages Across Standards



The BIG Question . . .



Why does Kentucky screen children as they enter kindergarten?

Why is Kentucky Screening Kindergarteners?

- Inform decision-making about early childhood systems
- Identify our statewide and local challenges
- Mobilize communities
- Allow us to communicate results of our work
- To demonstrate “return on investment”
- To encourage continuous improvement

Common Kindergarten Entry Screener

- BRIGANCE® Kindergarten Screener will be used by all Kindergarten programs
- 109 districts implemented the screen in 2012 voluntarily
- Participation will be required beginning in the 2013 school year
- 704 KAR 5:070 provides guidance in the administration and use of data
- Administered within 15 calendar days before the first instructional day and no later than the thirtieth instructional day

How many kids are School Ready?
 Do we have the right members?
 How affective are we?
 How can we improve?
 How can we make the most impact?
 Who needs help most?
 Quality services?
 Are there enough teachers?
 How can we make the biggest impact?



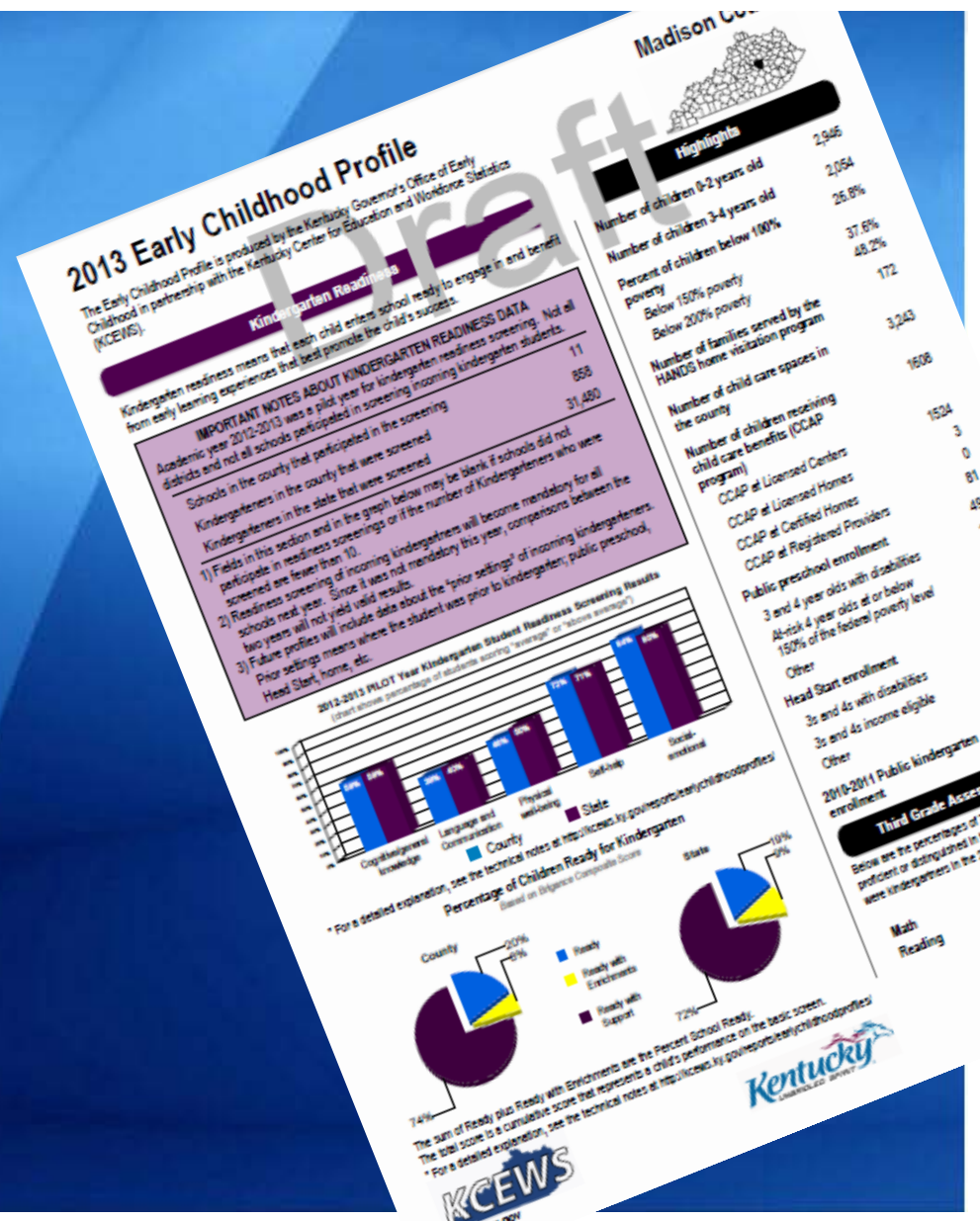
Fostering a Data-Rich Culture

- Changing the way you operate
- Moving from “what we think” to “what we know”
- Data-driven decision making
- Removes blame
- Addressing what the data tells us
- Developing a strategy to address the greatest needs
- Focusing on high impact activities
- Deliberate planning

What gets MEASURED gets CHANGED

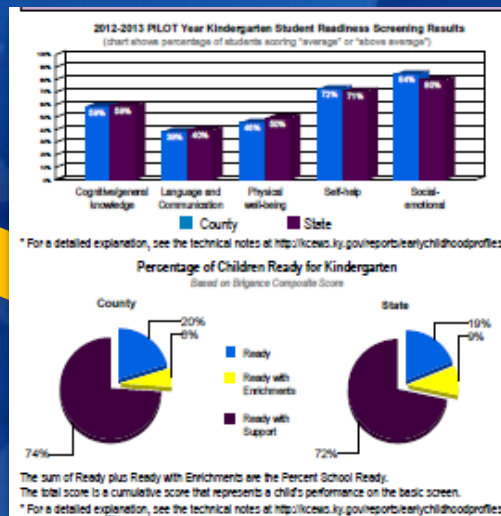
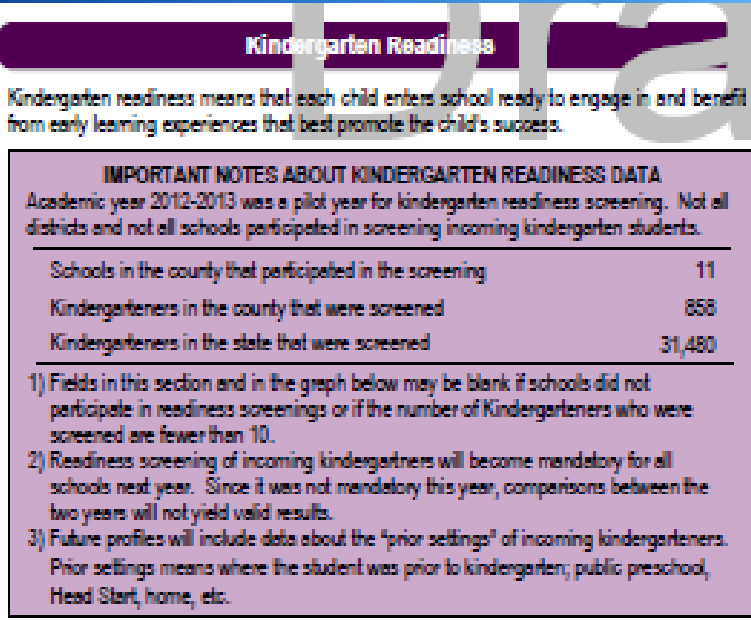
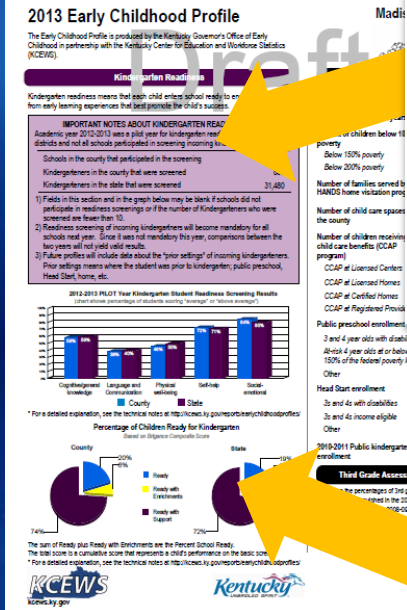
Governor's Office of Early Childhood Using Screener Data to Support School Readiness

- Combine Screener results with additional EC related data
- Displays data on a County level with a State Summary
- Provide a easy-to-use tool with actionable data elements
- Informs Councils and Communities on their efforts to improve School Readiness
- Created in partnership with
 - Governor's Office of Early Childhood
 - Kentucky Department of Education
 - Early Childhood Advisory Council
 - Kentucky Center for Employment Workforce Statistics
 - Cabinet for Health and Family Services



Early Childhood Profiles

2012-2013 Kindergarten Screener Results



Data Provided

- County results vs. State results for 2012-2013 pilot year
- Aggregate results by County (Not District)
- Composite score and Domain-level performances

Patterns

- How does the County compare with the State averages
- Compare performance by domain
- Compare the cognitive (basic) screen with the social emotional screen
- Compare County results with other data to determine level of participation in pilot

2012-2013 Kindergarten Screener Results

Terminology and Variables

*Every child is eligible for kindergarten once they meet the age requirement.
Schools must be ready to meet the needs of all eligible students.*

Terminology

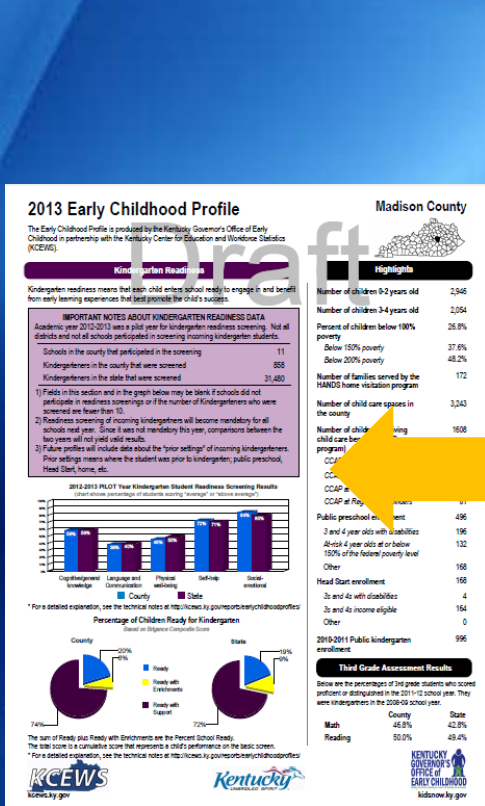
- Ready with Supports
- Ready
- Ready with Enhancements

- Below Average
- Average
- Above Average

Variables

- Number of Districts that participated in your County
- Number of schools that participated
- When the screen was conducted (15 days prior to 30 days after)
- Who conducted the screen (kindergarten teacher, councilor, assistant teacher, etc.)
- Where the screen was conducted (classroom, recruiting event, etc.)
- Social Emotional screen variables (who filled out, how much guidance)
- Some cohort differences between data sets

Early Childhood Profiles Highlights Section



Highlights	
Number of children 0-2 years old	2,946
Number of children 3-4 years old	2,054
Percent of children below 100% poverty	26.8%
Below 150% poverty	37.6%
Below 200% poverty	48.2%
Number of families served by the HANDS home visitation program	172
Number of child care spaces in the county	3,243
Number of children receiving child care benefits (CCAP program)	1,608
CCAP at Licensed Centers	1,524
CCAP at Licensed Homes	3
CCAP at Certified Homes	0
CCAP at Registered Providers	81
Public preschool enrollment	496
3 and 4 year olds with disabilities	196
At-risk 4 year olds or below 150% of the federal poverty level	132
Other	168
Head Start enrollment	168
3s and 4s with disabilities	4
3s and 4s income eligible	164
Other	0
2010-2011 Public kindergarten enrollment	996
3 and 4 year olds with disabilities	196
At-risk 4 year olds or below 150% of the federal poverty level	132
Other	168
Head Start enrollment	168
3s and 4s with disabilities	4
3s and 4s income eligible	164
Other	0
2010-2011 Public kindergarten enrollment	996

Data Provided

- Population characteristics (by age)
- Community Based Services (HANDS, Child Care, etc.)
- Child Care Assistance Program funding
- Preschool and Head Start Enrollment

Patterns

- Coverage – Are you reaching all children?
- Are families taking advantages of services (CCAP, HANDS)
- How effective are partners reaching at-risk populations
- How many children are not in an organized setting prior to Kindergarten?

Early Childhood Profiles Third Grade Assessment Results

Data Provided

- Reports on 3rd Grade performance levels in Reading and Math
- State average plus County aggregated result

Patterns

- Contrast cognitive screener results with Assessment results
- Note large variances
- Use supplemental data to drill into results
- Comparison to screener is not an “apples to apples” comparison

Third Grade Assessment Results

Below are the percentages of 3rd grade students who scored proficient or distinguished in the 2011-12 school year. They were kindergartners in the 2008-09 school year.

	County	State
Math	46.8%	42.6%
Reading	50.0%	49.4%

2013 Early Childhood

The Early Childhood Profile is produced by the Kentucky Center for Early Childhood in partnership with the Kentucky Center for Early Childhood (KCEWS).

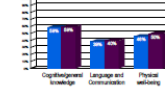
Kindergarten Readiness

Kindergarten readiness means that each child enters from early learning experiences that best prepare them for school.

IMPORTANT NOTES ABOUT KINDER
 Screening year 2012-2013 was a pilot year for local districts and not all schools participated in screening. Schools in the county that participated in the screening are listed below. Schools in the county that were screened are listed below.

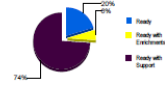
- 1) Fields in this section and in the graphs below may be blank. Schools did not participate in readiness screenings or if the number of kindergartners who were screened was fewer than 10.
- 2) Readiness screening of incoming kindergartners will become mandatory for all schools next year. Since it was not mandatory this year, comparisons between the two years will not yield valid results.
- 3) Future profiles will include data about the "prior settings" of incoming kindergartners. Prior settings means where the student was prior to kindergarten: public preschool, Head Start, home, etc.

2013-2014 PILOT Year Kindergarten Student Readiness Screening Results



* For a detailed explanation, see the technical notes at <http://kcews.ky.gov/report/earlychildhoodprofiles>

Percentage of Children Ready for Kindergarten



The sum of Ready plus Ready with Enrichments are the Percent School Ready. The top score is a cumulative score that represents a child's performance on the basic screen.

* For a detailed explanation, see the technical notes at <http://kcews.ky.gov/report/earlychildhoodprofiles>



KENTUCKY GOVERNOR'S OFFICE of EARLY CHILDHOOD

kidnow.ky.gov

Early Childhood Profiles (page 2)

Families, Health and Services

Families, Health and Services					
Select Indicators	County	State	State	Services Provided to Families and Children	
Children under five years old	5,000	5.9%	6.4%	The Governor's Office of Early Childhood, Cabinet for Health and Family Services, and local agencies provide support to at-risk families and children. These services promote healthy growth and development, assist with disabilities, subsidize early education, and more.	
Children living below 100% poverty line	1,569	26.8%	29.5%		
Children living below 150% poverty line	2,198	37.6%	41.6%		
Homeless children in the public school grades K-3	128	3.2%	5.3%		
Children with substantiated child abuse/neglect	262	1.5%	1.5%		
Households with a non-English language in home	1,753	5.6%	5.6%		
Births to mothers who are not high school graduates	509	16.7%	20.6%		
Births to teenage girls 15-19 years old	351	30*	50*		
Low birth weight babies (born less than 5.5 pounds)	256	8.0%	9.0%		
Preterm babies (born before 37 weeks of pregnancy)	275	9.0%	12.0%		
				Number Receiving Support Services in the County	
				Children receiving Medicaid insurance	6,486
				Children receiving KCHIP health insurance	1,002
				Children receiving child care subsidies	1,608
				Families served by the First Steps program	221
				Families served by the Health Access Nurturing Development Services (HANDS) home visitation program	172

* Rate per 1,000 females ages 15-19

Data Provided

- Family demographics
- Homelessness statistics
- Birth rates and characteristics
- Services to families (TANF, KCHIP, subsidies, First Steps, etc.)

Patterns

- Access to services – recognize gaps or struggles
- Families participating in First Steps or Hands
- Compare Screener results with the levels of access as a percent of families eligible

Madison County

Early Care and Education

STARS for KIDS NOW Rating

Early child care facilities can voluntarily participate in the STARS for KIDS NOW rating. A higher quality rating means better child-to-caregiver ratios, program curriculum, child care staff training, program regulatory compliance, and parent policies.

Child Care Centers with STARS Rating	Child Care Spans/Seats with STARS Rating
15	0
16	0
17	0
18	0
19	0
20	0
21	0
22	0
23	0
24	0
25	0
26	0
27	0
28	0
29	0
30	0
31	0
32	0
33	0
34	0
35	0
36	0
37	0
38	0
39	0
40	0
41	0
42	0
43	0
44	0
45	0
46	0
47	0
48	0
49	0
50	0

STARS: 15 0 15
 Not STARS: 22 0 22

Families, Health and Services

Select Indicators

County	State
5,000	5.9%
1,569	26.8%
2,198	37.6%
128	3.2%
262	1.5%
1,753	5.6%
509	16.7%
351	30*
256	8.0%
275	9.0%

State

6.4%

29.5%

41.6%

5.3%

1.5%

5.6%

20.6%

50*

9.0%

12.0%

Early Childhood Profiles (page 2)

KIDS Now & CECC Contacts

KIDS NOW Initiative

The Governor's Office of Early Childhood and Early Childhood Advisory Council (ECAC) guide KIDS NOW (Kentucky Invests in Developing Success NOW) using community resources, public-private partnerships, and collaborative planning to:

- support and strengthen families
- assure that all children grow to their full potential
- provide high quality, accessible, affordable early care and education options
- promote greater awareness of the importance of the first years for the well-being of all Kentucky's citizens.

Community Early Childhood Council

Madison County CECC

John Roden
john.roden@headstart1.org
<http://kidsnow.ky.gov/Mobilizing-Communities>
 859-623-7233

Go to <http://kcews.ky.gov/reports/earlychildhoodprofiles/> or <http://kidsnow.ky.gov/School-ReadinessPages/profiles.aspx> for sources, technical descriptions of each data element in this profile, notes for how to use this report, and links to other sources of information for the early childhood community.

Purpose

- Share with community and State partners
- Provides background information to new users
- Early Childhood Profiles are posted on kidsnow.ky.gov
- Available to the general public

Madison County

Early Care and Education

STARS for KIDS NOW Rating

Early child care facilities can voluntarily participate in the STARS for KIDS NOW rating. A higher quality rating means better child-to-caregiver ratios, program curriculum, child care staff training, program regulatory compliance, and personnel policies.

Child Care Centers with STARS Rating	Child Care Spaces/Seats with STARS Rating
15	1,650
0	0
15	1,650
0	0

STARS 15 0 1,650 0
Not STARS 0 0 1,650 0

Families, Health and Services

Select Indicators	County	State
Children under five years old	5,000	5.9%
Children living below 100% poverty line	1,550	28.3%
Children living below 150% poverty line	2,198	37.6%
Homeless children in the public school grades K-3	128	3.2%
Children with substantiated child abuse/neglect	202	1.5%
Hospitals with non-English language in home	1,732	6.6%
Births to mothers who are not high school graduates	539	16.7%
Births to teenage girls 15-19 years old	351	3.3%
Low birth weight babies (born less than 5.5 pounds)	256	8.1%
Preterm babies (born before 37 weeks of pregnancy)	275	9.1%

The Governor's Office of Early Childhood and Early Childhood Advisory Council (ECAC) guide KIDS NOW (Kentucky Invests in Developing Success NOW) using community resources, public-private partnerships, and collaborative planning to:

- support and strengthen families
- assure that all children grow to their full potential
- provide high quality, accessible, affordable early care and education options
- promote greater awareness of the importance of the first years for the well-being of all Kentucky's citizens.

Community Early Childhood Council
Madison County CECC

John Roden
john.roden@headstart1.org
<http://kidsnow.ky.gov/Mobilizing-Communities>
 859-623-7233

Go to <http://kcews.ky.gov/reports/earlychildhoodprofiles/> or <http://kidsnow.ky.gov/School-ReadinessPages/profiles.aspx> for sources, technical descriptions of each data element in this profile, notes for how to use this report, and links to other sources of information for the early childhood community.

Accessing the Early Childhood Profile

<http://kidsnow.ky.gov/School Readiness/Pages/profiles.aspx>
<http://kcews.ky.gov/reports/earlychildhoodprofiles/>

Community Collaboration = CECCs

“... a vehicle for bringing together many community members to support issues of importance to children and families.”

“... addresses the unique needs and strengths of local communities related to early childhood.”

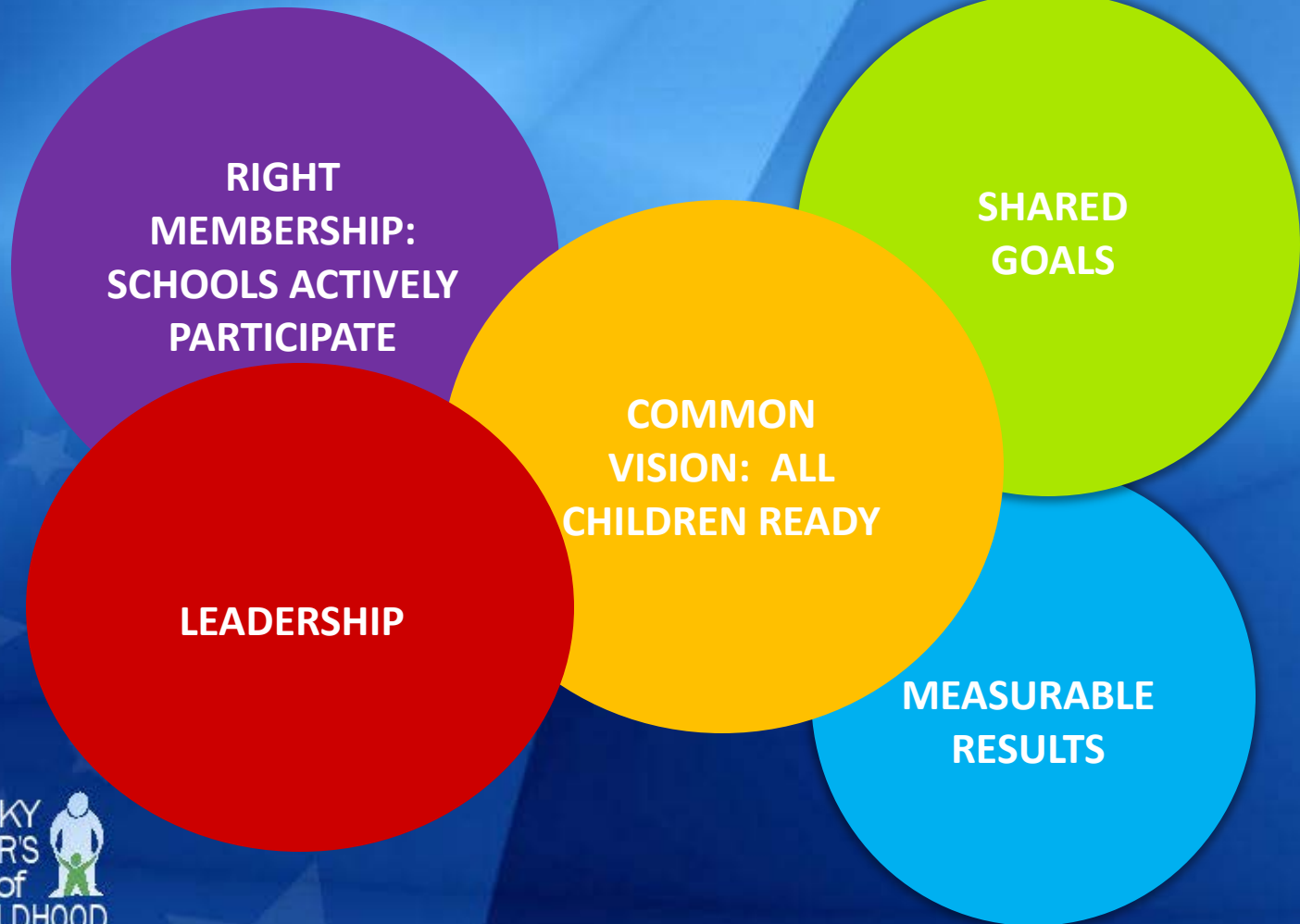


Community Early Childhood Councils (CECCs) make it happen at the local level!

- School District
- Head Start/ Early Head Start
- Child Care
- Family Resource Centers
- Resource & Referral Agency
- Early Intervention
- Cooperative Extension
- United Way/Success by 6
- Public Library
- Regional Training Centers
- Community Action Agency
- Health care professionals/
health department
- College or tech schools
- Parents/Foster parents
- Government
- Early childhood advocates
- Business Community

Community Early Childhood Councils (CECCs)

Forming the new vision



Priority #1: School Readiness

Changing the community conversation

Every Kentucky child will enter school ready to succeed.

Every parent will know what school readiness looks like and what they can do with their child to assure their success

Every community will understand that it takes all of us to get this work done.

**COMMON
VISION**

Priority #1: School Readiness

Changing the community conversation

Kindergarten Ready

Read at grade level

Graduation from High School

College and Career Ready

**COMMON
VISION**

Building on a Framework for Success

Improving
School
Readiness

Improving
Environments

Supporting Families

Providing Data

Entire Community

Improving Environments

STARS Participation

Quality Workforce

Ensuring Quality Learning Environments

Supporting Families

Opportunities For Shared Learning

Materials and Activities

Enhancing Access to Services

Helping parents be better first teachers

Providing Data

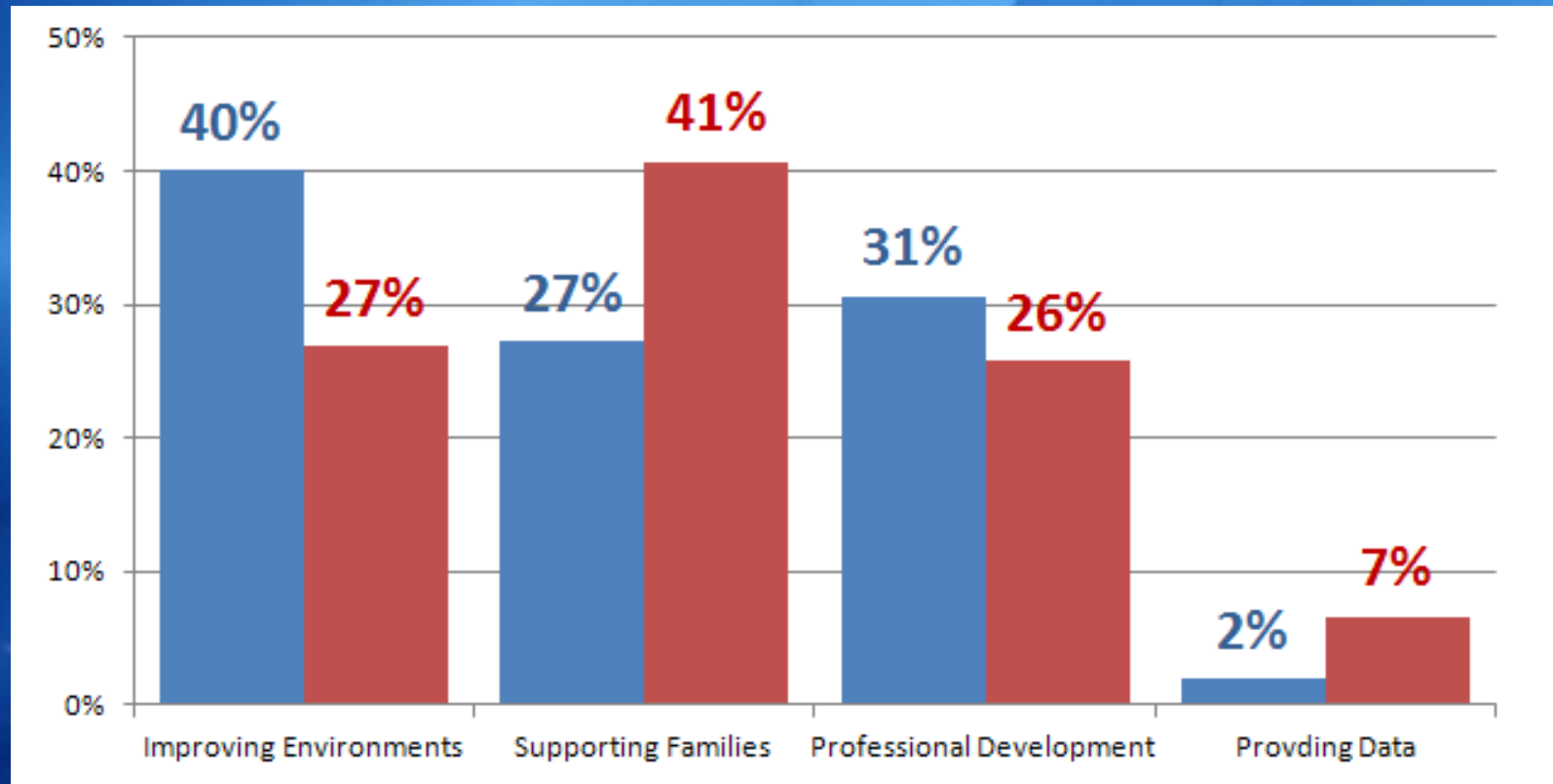
Access to Screening

Continuous Assessment

Data Sharing and Training

Applications Comparison

Activities by Category



2011-2012 Funded Councils



2012-2013 Councils (all applied)

Submitting a High Quality Application

Case Study: Stewart County

Analyze Data – Community Needs

- Analyze the EC Profiles
- Notice patterns
- Recognize area of greatest need

Create a Strategic Plan

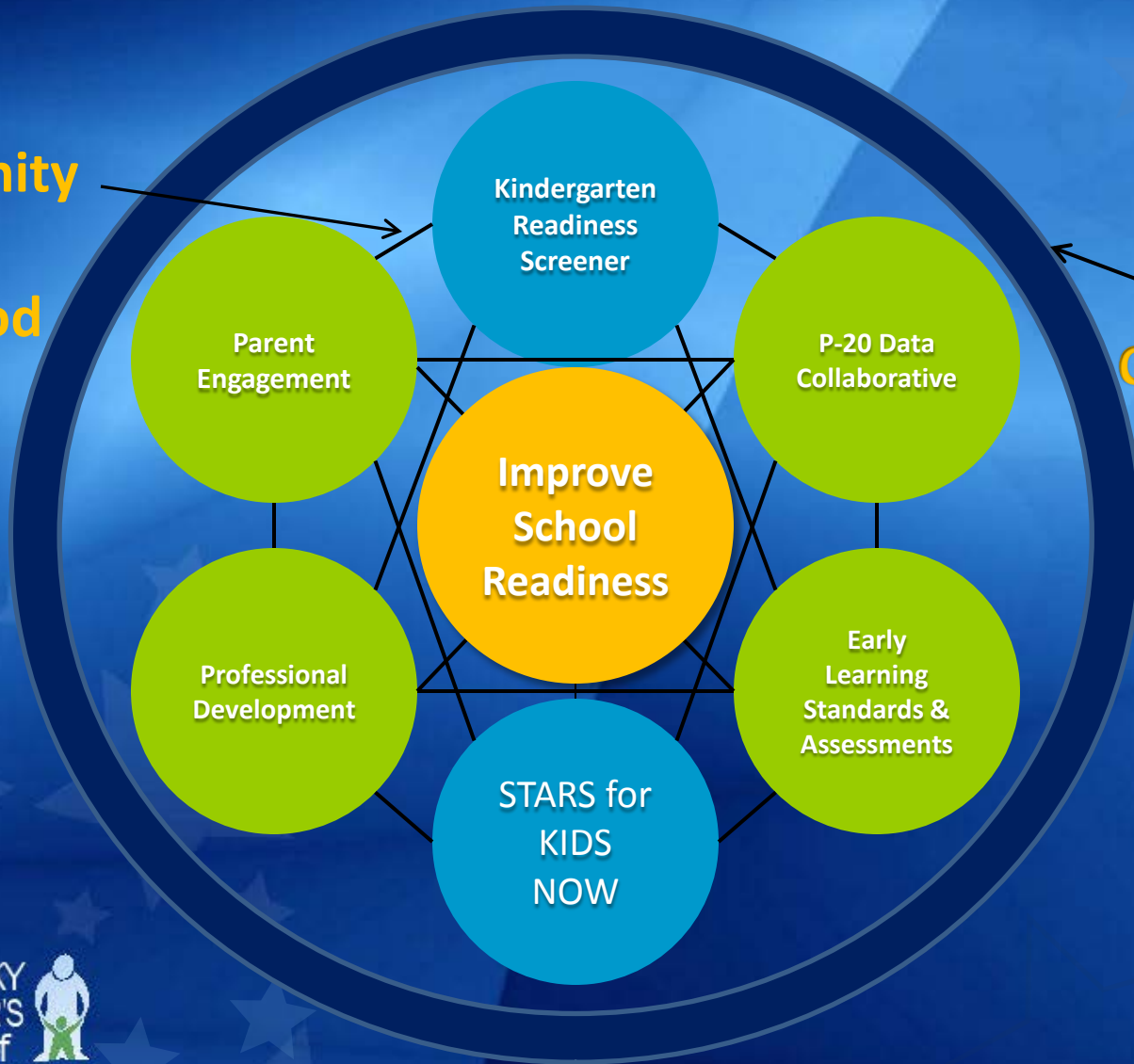
- Select Outcome
- Identify activity
- Develop a plan
- Collect data for outcomes
- Describe effects on School Readiness

Develop your Budget

- Identify resources
- Allocate resources
- Support activity with funding

Elements of the State System

Community
Early
Childhood
Councils



Schools
Communities
Child Care



Governor's Office of Early Childhood
125 Holmes St.
Frankfort, KY 40601
502-782-0200
<http://kidsnow.ky.gov>

Thank you!

Questions/Answers

KENTUCKY
GOVERNOR'S
OFFICE of
EARLY CHILDHOOD

